



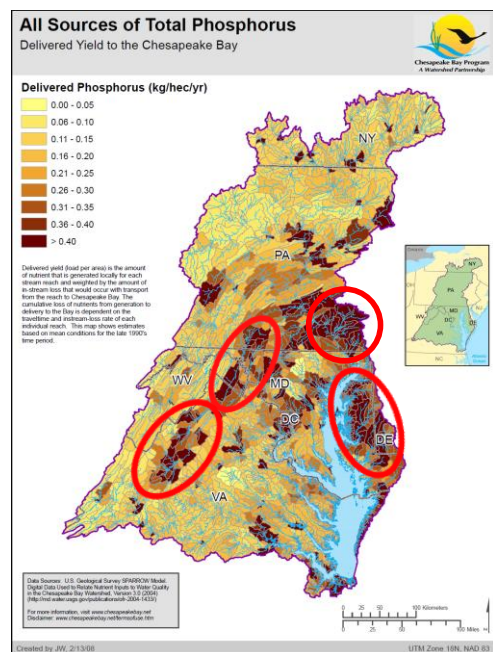
# Farm Manure to Energy Initiative

## Request for Farm Partners who are:

- willing to host a manure to energy technology demonstration designed to manage excess manure and poultry litter nutrients.
- located in a phosphorus “hotspot” within the Chesapeake Bay watershed in MD, PA and WV (see map).

Farm Pilot Project Coordination, Inc. (FPPC), a non-profit organization, is seeking farm sites and farmers who are interested in becoming project partners for pilot demonstration projects to capture energy and nutrients from on-farm generated animal manures. Up to three additional farms will be selected and ‘best-fit’ technologies will be installed and operated in a showcase mode during the next two years. (Two farms in VA and DE have already signed on as partner sites.) Projects will use animal manures to provide energy in the form of heat or electricity to the farm (and potentially the electric grid), along with other valuable byproducts that could be marketed by the producer.

Projects are to be implemented as part of a *Farm Manure to Energy Initiative* with partner contributions and funding from the National Fish and Wildlife Foundation, the U.S. Department of Agriculture and private foundations. The primary objective of the *Farm Manure to Energy Initiative* is to advance solutions for handling excess manure that provide economic and environmental benefits – (see attached fact sheet).



Candidate farms (or farm cooperatives) within Phosphorous hot spots of the Chesapeake Bay watershed are now being considered for West Virginia, Maryland and Pennsylvania. Farms may express interest with or without an identified technology solution.

## Farm/Farmer Selection Criteria:

- Strong interest in supporting and deploying new technology/methods on farm
- Compatibility of farmer’s future business plans with a manure-to-energy demonstration
- Adequacy of on-farm existing litter storage and/or plans to provide storage
- Level of farmer’s interest in dedicating resources (i.e. time and facilities) to working with grant partners to accomplish demonstration project objectives including hosting visitors, sharing lessons learned and participating in outreach during field days

- EQIP eligibility and ability to meet matching cost-share requirements
- Fate of nutrients generated at the farm and the availability of cropland within the control of the farmer - preference given to farmers experiencing a nutrient imbalance
- Proximity of proposed site to Phosphorous hotspot within the Chesapeake Bay watershed
- Leadership qualities of the farm owner
- Ability to help meet community requirements and/or satisfy concerns of neighbors
- Proposed technology is a good match for the application, if submitted with expression of interest

### **Deadline for Submission**

For additional information, please contact the FPPC Regional Director. For consideration, farmers may submit the one page form (attached) to the offices of the FPPC no later than February 15, 2012.

Farm Pilot Project Coordination, Inc.  
101 E. Kennedy Blvd, Suite 3250  
Tampa, FL 33602

Attention: Jane Corson Lassiter: FPPC Chesapeake Bay Regional Director  
Phone: 727-348-9342 or 813-222-3272  
E-mail: jane.lassiter@fppcinc.org

Submissions will reviewed by February 15, 2012 and additional information will be requested on possible candidate sites. The selection process will identify farm operations that are appropriate to specific applications and technologies. Project implementation will require close coordination with FPPC and the technology provider. Performance data will be obtained during the showcase period and include tracking of the fate of manure nutrients.

For more information about FPPC and ongoing work to advance innovative solutions to manure management, please visit the website, [www.fppcinc.org](http://www.fppcinc.org). FPPC's specific mandate is to oversee the implementation and administration of a Pilot Project Program to demonstrate economically viable innovative treatment technology systems that reduce the nutrient content of the waste stream from AFOs. FPPC's efforts are overseen by the Natural Resource Conservation Service (NRCS), a division of the United States Department of Agriculture.

***Farm Manure to Energy Initiative***  
**Expression of Interest to become an ON-farm**  
**Demonstration Site for Manure to Energy Technologies**

FARM OWNER:

FARM CONTACT INFORMATION:

FARM LOCATION ( 911 ADDRESS, COUNTY, STATE):

TYPE OF OPERATION:

NUMBER ANIMALS:

TONS OF MANURE GENERATED ANNUALLY:

EXISTING ANIMAL WASTE HANDLING FACILITIES:

CROPLAND/PASTURE/HAYLAND AVAILABLE FOR LAND APPLICATION:

CROPLAND ACRES \_\_\_\_\_

PASTURE ACRES \_\_\_\_\_

HAYLAND ACRES \_\_\_\_\_

I am interested in a particular technology and vendor. \_\_\_\_\_  
(please describe)

I am interested in the concept, but need additional information about available options. \_\_\_\_\_